



STEEL WOOL www.steelwoolband.com | tim@steelwoolband.com

Press Materials

“Acoustic Rock Reborn”

“STEEL WOOL is a harmony loving, acoustic rock band spinning on the edges of funk, classic rock, and traditional Zimbabwean mbira music. *Family friendly, upbeat and happily serious*”

“STEEL WOOL takes you on a new journey through real life as they perform original songs in the familiar style of classic folk-rock. Featuring *Tim Mueller* as songwriter, lead vocalist and guitar player; *TR Kelley* (Babes with Axes) on bass and vocals, *Nel Applegate* (Mudzidzi) on mbira, djembe, percussion and vocals, and *Randy Hamme* (The Raventones) on drums, this Eugene, Oregon band moves the heart and soul with stories of truth and joy and love and loss, and catches fire with three part harmonies, the beautiful mbira, inventive bass lines, danceable grooves and world beat percussion.

From rich harmony on "My Country Fair", to the danceable drum and djembe drive on “Rainbow”, to tender love songs like “All the Love in the World” (the title of their CD), this show will get you on your feet and into your heart!”

Quotes:

"The STEEL WOOL Band is one awesome band that will rock your socks off!! Full of original tunes and lots of good energy!! A delight to have them on my show."

Rome of the Rock-n-Rome Show on KRVM 91.9 FM, Eugene, Oregon www.krvm.org

"Your band is really, really, really, really good. I enjoyed listening tremendously. You are tight and the music really grabs. Great melodies, lyrics, beat –it is all great." Dale VM

Past performance venues include:

Lane County Fair | Sam Bonds Garage
Eugene Saturday/Holiday Market | Cozmic
Territorial Vineyards | Oregon Country Fair
Cottage Grove Axe & Fiddle Public House
Dexter 4th of July Festival | WOW Hall
Florence Events Center | Hemp Fest Eugene
Eugene Vet's Club | Bohemia Park, CG
Deadwood Community Center
Alder Bistro, Yachats | Lowell Grange
Astoria Sunday Market | Black Sheep Gathering
Wildflower & Music Festival

Online and on air radio support:

KLCC 89.7FM | KRVM 91.9 | KZMU.org (Moab)
KMUN Astoria, OR | Jango Radio | Rhapsody
Sound Cloud | iTunes | Amazon.com | CD Baby
ReverbNation | numerous online stations



STEEL WOOL Band Bio's

Tim Mueller has been performing and writing music since 1965. A featured acoustic act during the Vietnam protest era, he performed at many venues in the Midwest before relocating to New York where he opened for major acts including the Byrds, Sugarloaf and Ted Nugent. His guitar style is reminiscent of Steven Stills, with songs drawing inspiration from many genres including the Blues, World Beat, Folk-Rock and Rock.

After transplanting to Oregon 20 years ago, Tim has performed at many local clubs and events in Central Oregon and has done much volunteer work with the Autism community as a Founder and former board member of KindTree.org.

Tim writes heart tugging songs of truth and joy and love and loss, and delivers them with a voice resonating with the power and wisdom of a life's journey and the sonic feel and warmth of rich, dark, melted chocolate. His approach to the guitar incorporates driving rhythm and out-of-the-box chord voicing producing a solid rhythm guitar groove for the rest of the band to build upon.

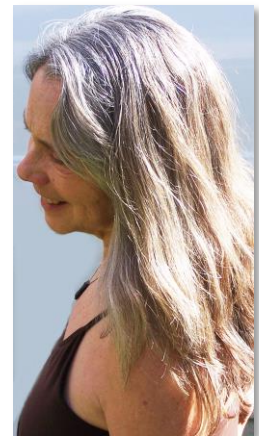


TR Kelley's Knowledge of stage, music, theory, and bass guitar spans 40 years. She has played with many popular Northwest acts including 'Babes with Axes', 'The Raventones', and the Laura Kemp Band. TR's bright hard-driving presence on both fretted and fretless basses is reminiscent of Jaco Pastorius' work with Joni Mitchell. TR brings a dynamic and soulful approach to her harmony vocals, and an uncanny ability to meld her voice to bring the correct feel, timbre and tone needed to convey the message of the lyric on an almost instinctual level. TR's confident and empowering stage presence captivates, entertains, and bring inspiration to each audience she encounters.



SteelWoolBand.com

Nel Applegate is a regular on the Eugene music scene performing in the marimba band "Jenaguru" and the mbira ensemble "Mudzidzi Mbira". Nel is a strong, solid and capable harmony singer who's warm amber voice rounds out STEEL WOOL's powerful vocal triad. Nel has studied with many Zimbabwean master musicians over the past decade and uses various percussion instruments, djembe and mbira to bring a world beat edge to their sound.



Randy Hamme grew up loving music. Randy's background as multi-instrumentalist, professional sound engineer, song writer and his love of arrangement brought on by the music of the "big band" and "prog rock" era bring depth to his drum and percussion playing role in STEEL WOOL.

Randy and TR, the "RTR Rhythm Section" have performed together for many years as the popular duo "The Raventones" and have developed the uncanny tightness, feel, and instinct of a veteran rhythm section. Randy brings a snap and vibrancy to his playing and to the stage with his unique wool covered drum set. Baaaaa.



tim@steelwoolband.com | 541 521 7208